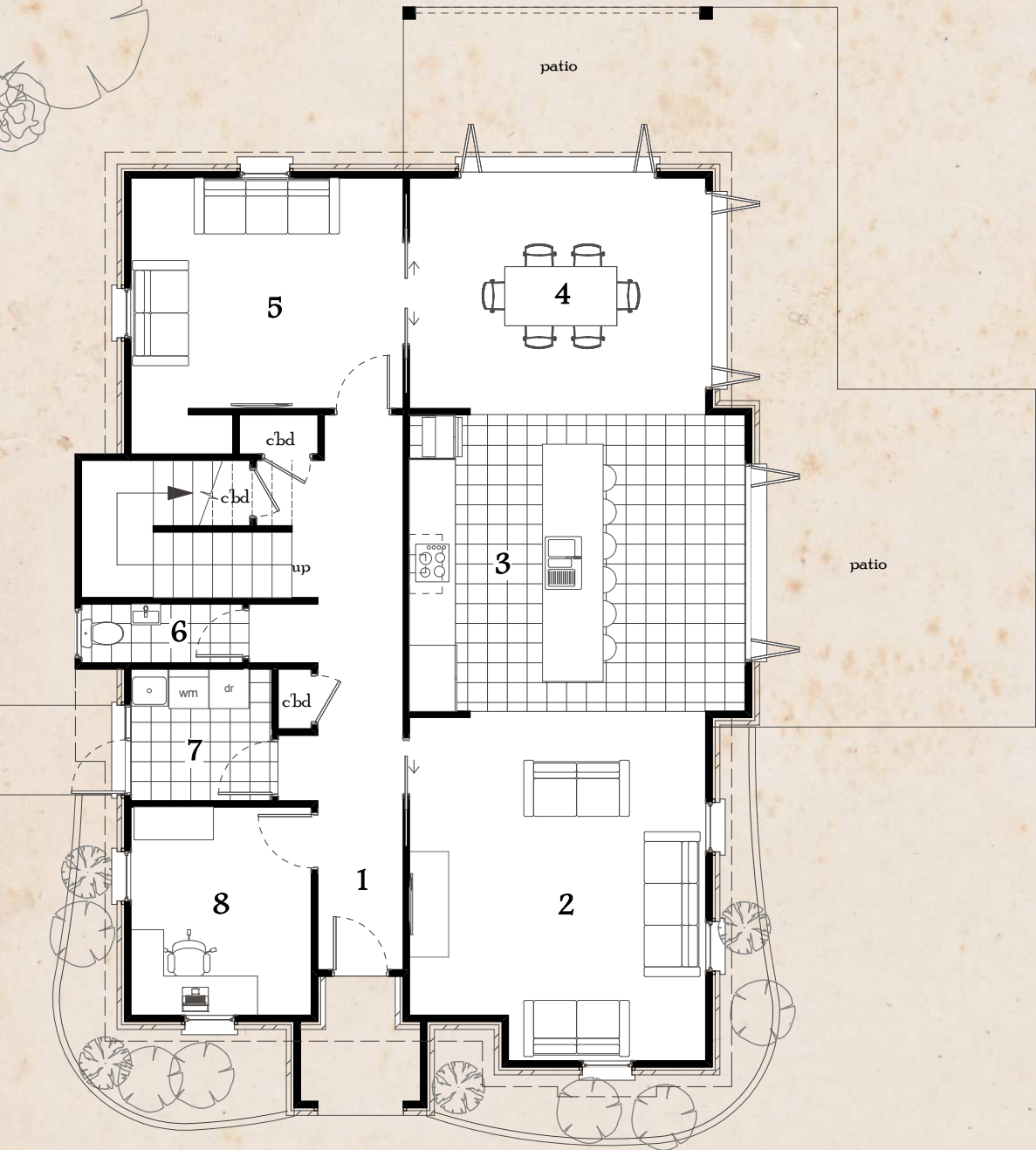


Design Influence:
The Tudor Revival architecture of the 20th century (commonly called mock Tudor in the UK) first manifested itself in domestic architecture beginning in the United Kingdom in the mid to late 19th century based on a revival of aspects of Tudor style.



LEGEND:

1.	Entry	1.3 x 1.5m
2.	Living Room	4.5 x 5.2m
3.	Kitchen	5.0 x 4.5m
4.	Dining Room	4.5 x 3.5m
5.	Family Room	4.1 x 4.3m
6.	W.C	0.9 x 2.4m
7.	Laundry	2.1 x 2.0m
8.	Office	2.7 x 3.2m

approximate room sizes only

AREAS: (over brick)

Ground Floor	130.26m ²
First Floor	126.15m ²
Total	256.31m ²

GROUND FLOOR PLAN

Design Influence:
The Tudor Revival architecture of the 20th century (commonly called mock Tudor in the UK) first manifested itself in domestic architecture beginning in the United Kingdom in the mid to late 19th century based on a revival of aspects of Tudor style.



- LEGEND:
- 9. Master Bedroom 4.8 x 4.5m
 - 10. Wardrobe 1.7 x 3.2m
 - 11. Ensuite 2.3 x 3.2m
 - 12. Bedroom 2 4.8 x 5.1m
 - 13. Bedroom 3 3.7 x 3.1m
 - 14. W.C 1.0 x 2.0m
 - 15. Bathroom 3.6 x 2.3m
 - 16. Bedroom 4 4.4 x 3.8m
- approximate room sizes only

AREAS: (over brick)

Ground Floor	130.26m ²
First Floor	126.15m ²
Total	256.31m ²

FIRST FLOOR PLAN